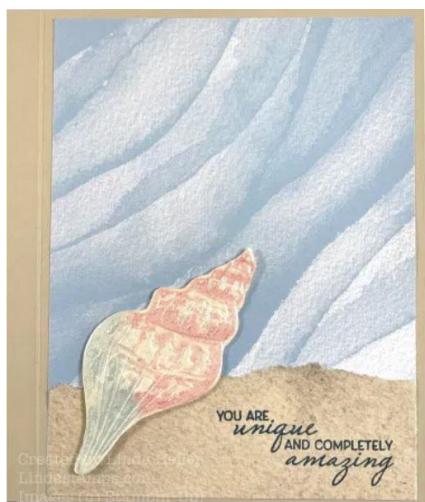


DIY Pearlized Cardstock with Sand & Sea Suite

All supplies from 2020-2021 Stampin' Up! Catalogs



www.Lindastamps.com



(inside)

Stamp Sets

- Friends are like Seashells

Ink/Markers

- Misty Moonlight Ink Pad
- Blushing Bride Ink Pad (inside)
- Seaside Spray Ink Pad (inside)

Accessories

- Dimensionals
- Tasteful Labels Dies
- Frost white Shimmer Paint
- Blending Brushes
- Seashells 3D Embossing Folder
- Seaside Seashells Dies
- Linen Thread
- Opal Rounds

Cardstock/Papers

- Very Vanilla Card Stock
- Sand & Sea Designer Series Paper
- Sahara Sand Card Stock

Cutting Measurements (CS = Cardstock, DSP = Designer Series Paper)

Sahara Sand CS: 5-1/2" x 8-1/2", score in landscape position at 4-1/4" for a side fold card.

DSP: 2" x 4" for large label. 4" x 5-1/4" for inside card. 1-1/2" x 4" torn layer.

Vanilla CS: 1-1/2" x 3" for small label. 2" x 3-1/2" for seashell inside card.

Misty Moonlight CS: 4" x 5-1/4" for embossed layer.

Linen Thread: 24"

Created by Linda Heller, Ind. Stampin' Up Demonstrator

www.Lindastamps.com Stamping School

All images © Stampin' Up!