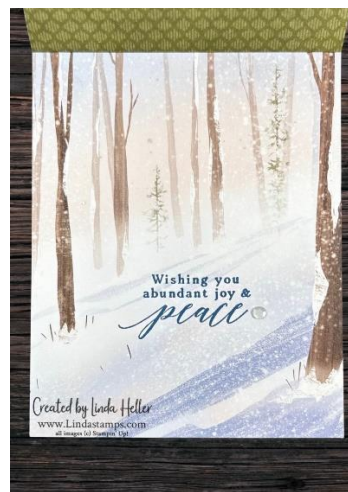
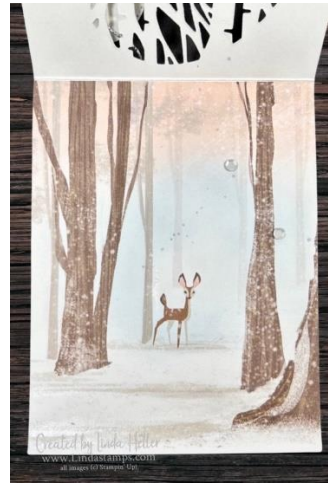


One Horse Open Sleigh Using Aspen Dies

Created by Linda Heller
Blog: www.Lindastamps.com
Email: Linda@stampingschool.com
all Supplies © Stampin' Up!
Page 1 of 6



Stamp Sets: Perched in a Tree (sentiment)
Dies: Aspen Dies, Stylish Shapes
Ink: Misty Moonlight
Cardstock: Thick Basic White
Designer Paper: 6x6 One Horse Open Sleigh
Accessories: Silver Cord, Wink of Stella

Cutting Measurements: Card will be 4-1/4" x 5-1/2" when folded

Thick White cardstock: 4-1/4" x 11", score in landscape position at 5-1/2" for a top fold card. Cut Aspen window die on front of card. 2" x 2" to cut stitched circle for sentiment, approx. 1-3/4"

Designer Paper: The deer panel is 4-1/4" x 5-1/2", scored 1/4" at top to glue. 2nd panel is 4-1/4" x 5-1/4"

Cord: 6"

One Horse Open Sleigh

using Horse & Sleigh Bundle

Created by Linda Heller
Blog: www.Lindastamps.com
Email: Linda@stampingschool.com
all Supplies © Stampin' Up!



Stamp Sets: Horse & Sleigh (online exclusive July 2023),

Dies: Horse & Sleigh

Ink: Early Espresso, Misty Moonlight

Blends: Real Red, Crumb Cake, Pecan Pie, Old Olive, Wild Wheat

Cardstock: Basic White, Early Espresso

Designer Paper: 6x6 One Horse Open Sleigh, Silver Foil

Accessories: Blending Brush, 1" circle punch or die for moon mask, Wink of Stella

Cutting Measurements: Card will be 4-1/4" x 5-1/2" when folded

Early Espresso CS: 5-1/2" x 8-1/2", scored in landscape position at 4-1/4" for a top fold card. 3" x 5-1/2", scored in portrait position at 1" and 2" to create "W" fold.:

Designer Paper: Two pieces 4" x 5-1/4", two pieces 3/4" x 5-1/4" each.

Basic White CS: 3" x 5-1/2" to stamp and cut sleigh and horse.

Silver Foil CS: 1" x 3" to cut sleigh blades

One Horse Open Sleigh

recessed frame

Created by Linda Heller
Blog: www.Lindastamps.com
Email: Linda@stampingschool.com
all Supplies © Stampin' Up!



Stamp Sets: Peaceful Deer (retired sentiment) or Brightest Glow

Dies: Countryside Corners

Ink: Early Espresso

Cardstock: Basic White, Cherry Cobbler

Designer Paper: 6x6 One Horse Open Sleigh, Silver Foil

Accessories: Linen Thread, Foam Adhesive Sheets

Cutting Measurements: Card will be 4-1/4" x 5-1/2" when folded.

Cherry Cobbler CS: 5-1/2" x 8-1/2", scored in landscape position at 4-1/4" for a side fold card.

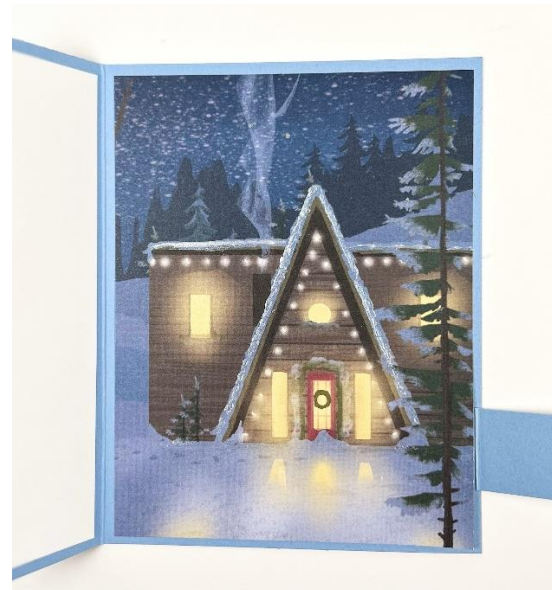
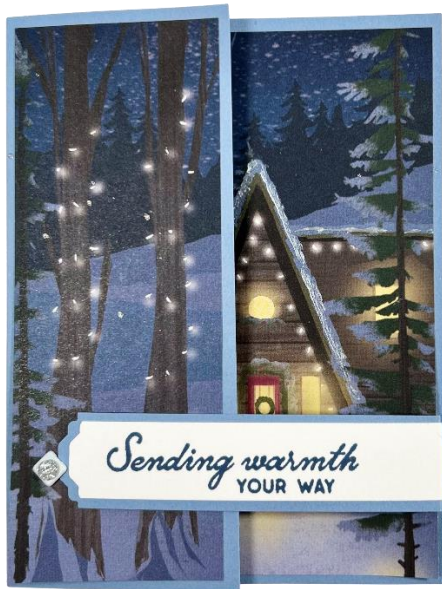
Designer Paper: 4" x 5-1/4". 1/2" x 2-1/2" for banner. Frame is approx. 2-1/4" x 3-1/4"

Basic White CS: 1/2" x 2-1/2" for sentiment banner.

Linen Thread: 20"

One Horse Open Sleigh Latch Card

Created by Linda Heller
Blog: www.Lindastamps.com
Email: Linda@stampingschool.com
all Supplies © Stampin' Up!



inside

Stamp Sets: Horse & Sleigh

Ink: Misty Moonlight

Cardstock: Basic White, Boho Blue

Designer Paper: 6x6 One Horse Open Sleigh

Accessories: Lovely Labels punch (retired) or Happy Labels pick a punch, Round or Square Brads, Wink of Stella, Pearlized Enamel Effects - white

Cutting Measurements: Card will be 4-1/4" x 5-1/2" size when folded (C.S = cardstock)

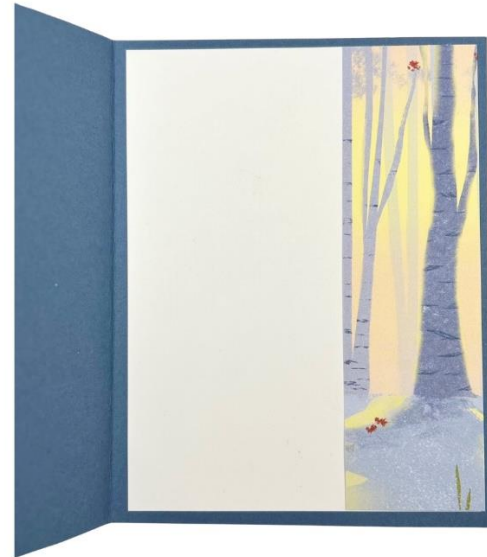
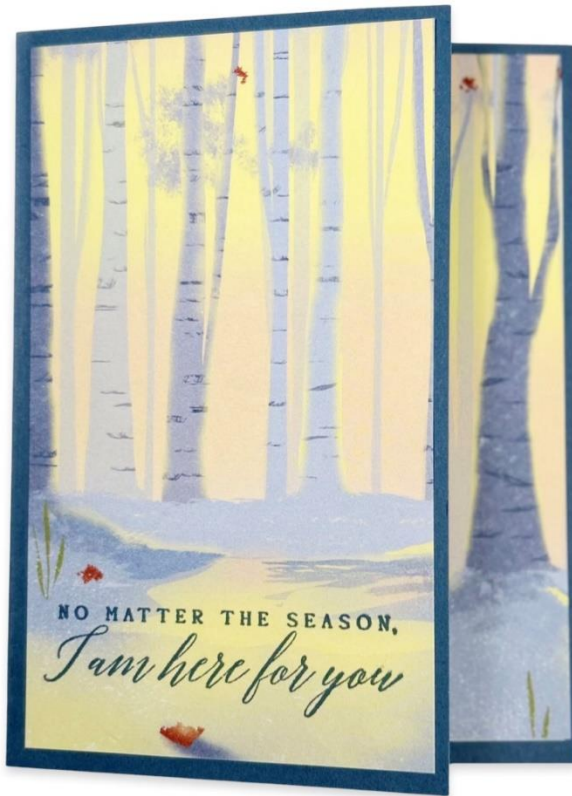
Boho Blue CS: 5-1/2" x 6-1/2", scored in landscape position at 2-1/4" for a side fold card.
1" x 4-1/4" for sentiment layer.

Basic White CS: 3/4" x 4-1/4" for sentiment. 2" x 5-1/4" for inside flap.

Designer Paper: 2" x 5-1/4" and 4" x 5-1/4"

One Horse Open Sleigh using *Perched in a Tree*

Created by Linda Heller
Blog: www.Lindastamps.com
Email: Linda@stampingschool.com
all Supplies © Stampin' Up!



Stamp Sets: Perched in a Tree

Ink: Misty Moonlight

Cardstock: Basic White, Misty Moonlight

Designer Paper: 6x6 One Horse Open Sleigh

Cutting Measurements: Card will be 4-1/4" x 5-1/2" size when folded (C.S = cardstock)

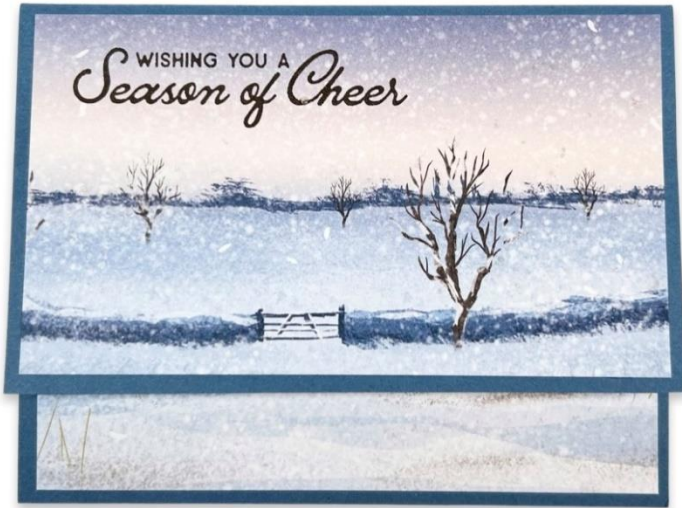
Misty Moonlight CS: 5-1/2" x 7-1/2", scored in landscape position at 3-1/4" for a side fold card.

Basic White CS: 4" x 5-1/4" for inside card.

Designer Paper: 3" x 5-1/4" and 1-1/2" x 5-1/4"

One Horse Open Sleigh

Created by Linda Heller
Blog: www.Lindastamps.com
Email: Linda@stampingschool.com
all Supplies © Stampin' Up!



Stamp Sets: Horse & Sleigh

Ink: Early Espresso

Cardstock: Basic White, Misty Moonlight

Designer Paper: 6x6 One Horse Open Sleigh

Accessories: Wink of Stella

Cutting Measurements: Card will be 4-1/4" x 5-1/2" size when folded (C.S = cardstock)

Misty Moonlight CS: 5-1/2" x 7-1/2", scored in landscape position at 2-1/4" for a side fold card. 1" x 4-1/4" for sentiment layer.

Basic White CS: 4" x 5-1/4" for inside card

Designer Paper: 3" x 5-1/4" and 3" x 5-1/4" for inside card