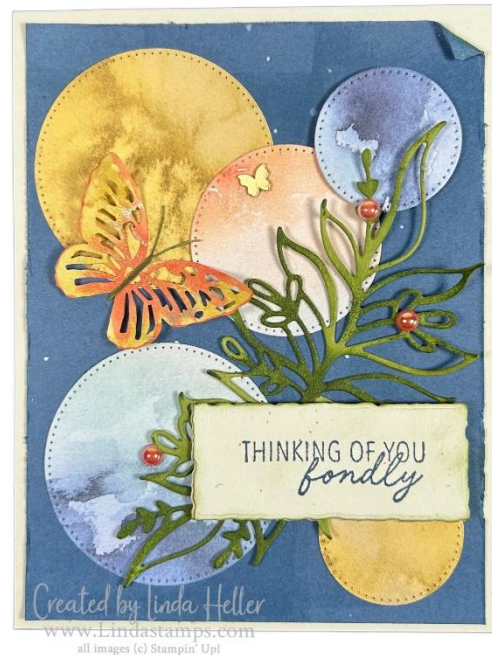


## Thoughtful Journey Designer paper and Thoughtful Wishes Bundle

Created by Linda Heller  
Blog: [www.Lindastamps.com](http://www.Lindastamps.com)  
Email: [Linda@stampingschool.com](mailto:Linda@stampingschool.com)  
all Supplies © Stampin' Up!



**Stamp Sets:** Thoughtful Wishes

**Dies:** Thoughtful Wishes, Deckled Rectangles, Stylish Shapes

**Ink:** *Left Card:* Lost Lagoon, VersaMark *Right Card:* Misty Moonlight

**Blends Alcohol Markers:** Wild Wheat, Petunia Pop (left) or Calypso Coral (right), Mossy Meadow

**Cardstock:** *Left Card:* Thick Basic White, Mossy Meadow. *Right Card:* Basic Beige, Mossy Meadow

**Designer Paper:** Thoughtful Journey 6x6

**Accessories:** Stampin' Dimensionals, Heat tool for embossing, Brass Butterflies, Paper Butterfly Accents

**Cutting Measurements:** White Card will be 4-1/4" x 5-1/2" when folded CS = cardstock

**Card:** 4-1/4" x 11", scored in landscape position at 5-1/2" for a top fold card.

**Card Layer:** 4" x 5-1/4".

**DSP:** 4" x 6" to cut 5 circles from 1" to 2" in size.

**Large floral die CS:** 3" x 5"

**Sentiment rectangle:** 1" x 2-1/2" when cut.



**Stamp Sets:** Thoughtful Wishes

**Dies:** Thoughtful Wishes, Everyday Details

**Ink:** Mossy Meadow

**Blends Alcohol Markers:** Wild Wheat, Mossy Meadow

**Cardstock:** Mossy Meadow, Basic White

**Designer Paper:** Thoughtful Journey 6x6

**Accessories:** Stampin' Dimensionals, Paper Butterfly Accents, Petunia Pop Ribbon

**Cutting Measurements:** White Card will be 4-1/4" x 5-1/2" when folded CS = cardstock

**Mossy Meadow Card:** 4-1/4" x 11", scored in landscape position at 5-1/2" for a side fold card.

**Basic White CS:** 4-1/4" x 5-1/2", tear 1/4" off bottom. 1-1/2" x 3" to cut rectangle for sentiment.

**DSP:** 3-3/4" x 5-1/2". 1" x 5-1/2" for decorative strip.

**Large floral die CS:** 3" x 5"

**Sentiment rectangle:** 1" x 2-1/2" when cut.